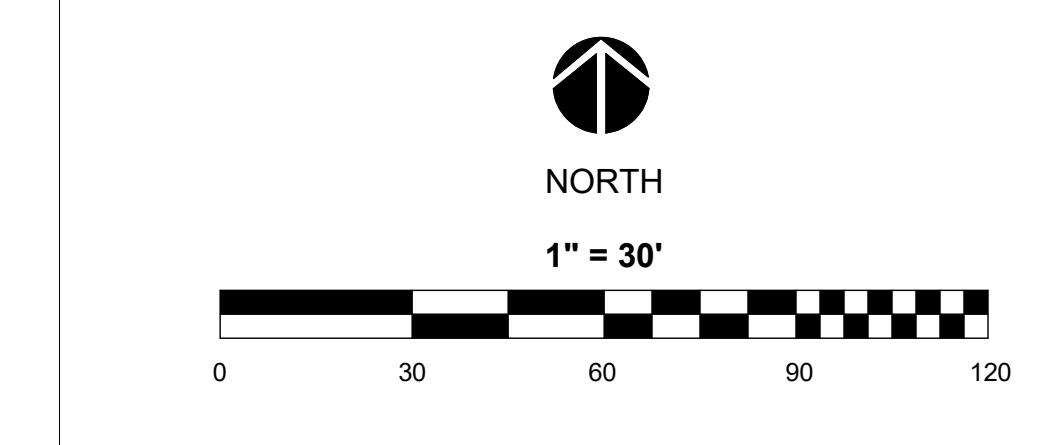


EASEMENT  
 46' - 0.2832'

281' - 7.316'

678' - 7.1516'



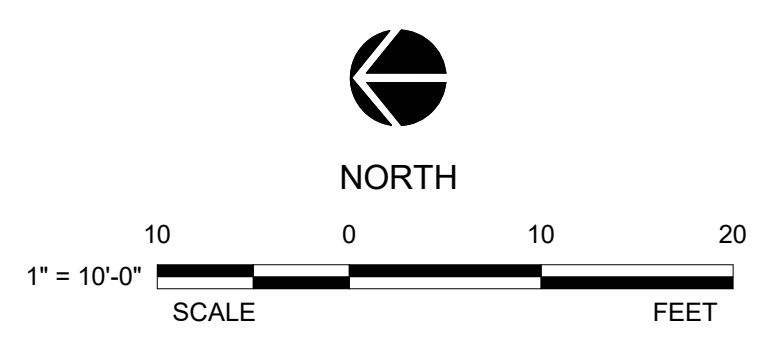
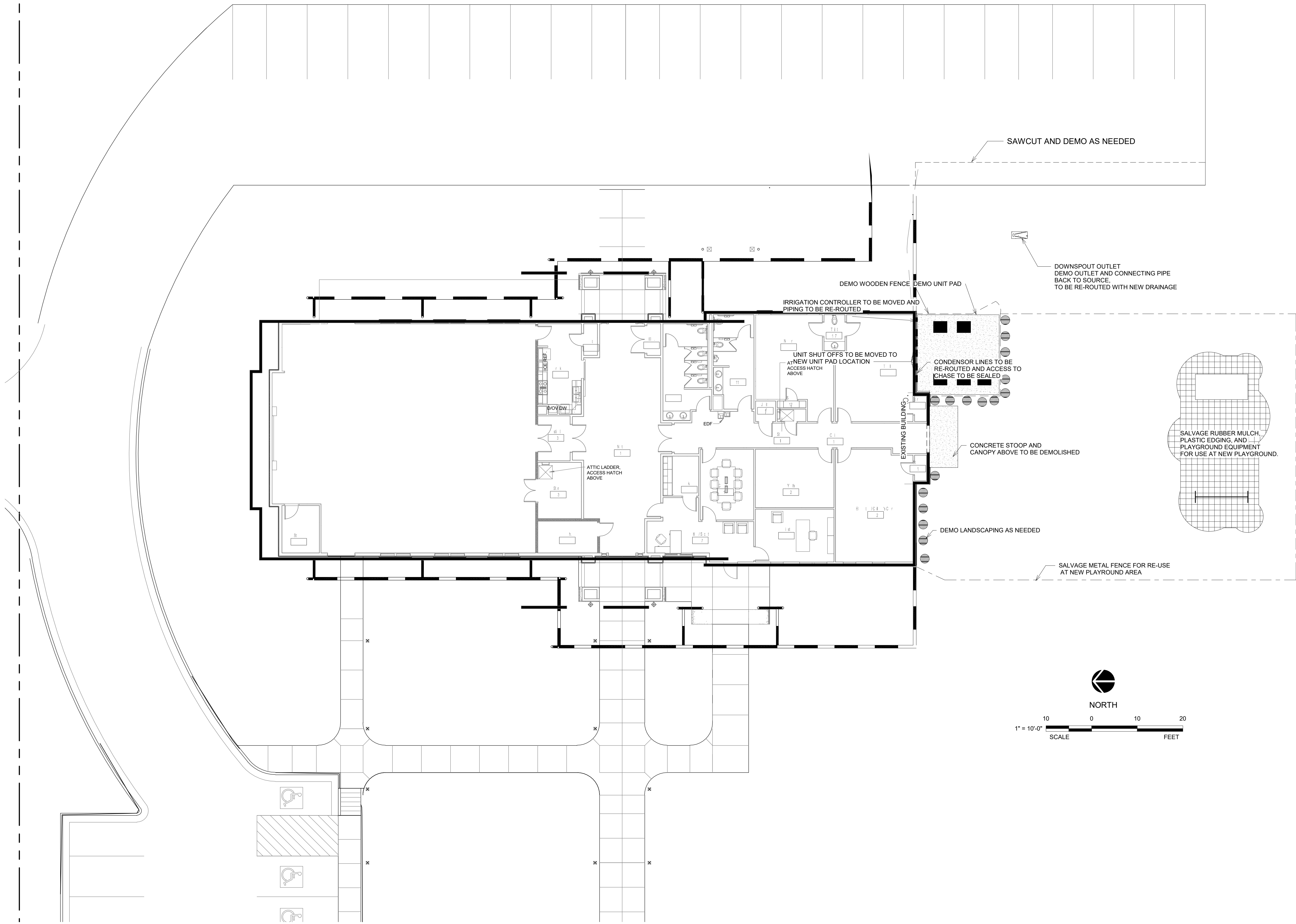
No.	Description	Date

**HOLY TRINITY  
 CLASSROOMS**  
 Site Plan

Project number Project Number  
 Date 07/15/2022  
 Drawn by Author  
 Checked by Checker

**C1**

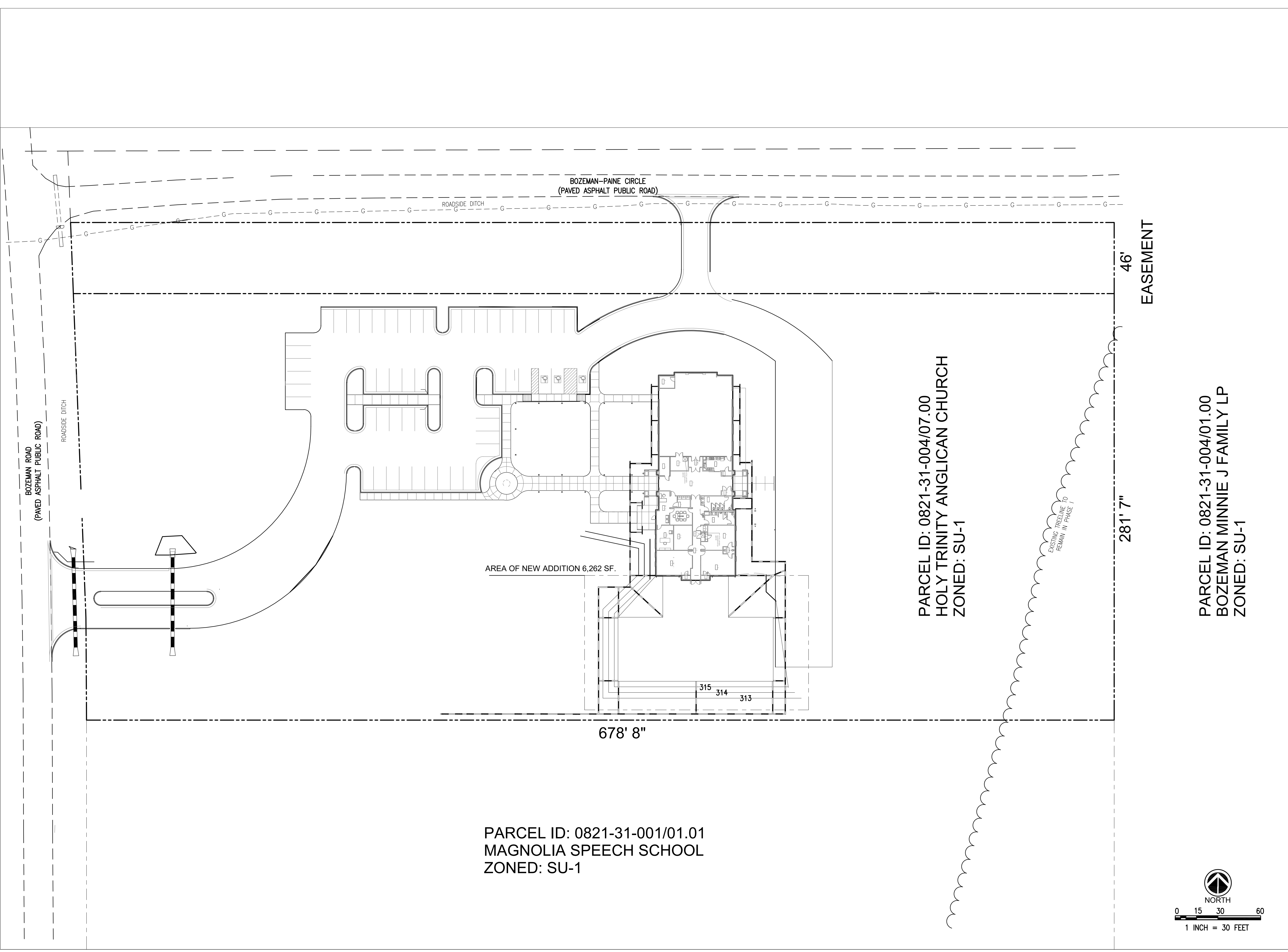
Scale 1" = 30'-0"



No.	Description	Date

**HOLY TRINITY CLASSROOMS**  
 SITE PLAN DEMO

Project number	Project Number
Date	07/15/2022
Drawn by	Author
Checked by	Checker
<b>C2</b>	
Scale	1" = 10'-0"



PARCEL ID: 0821-31-004/07.00  
 HOLY TRINITY ANGLICAN CHURCH  
 ZONED: SU-1

46' EASEMENT

281' 7"

PARCEL ID: 0821-31-004/01.00  
 BOZEMAN MINNIE J FAMILY LP  
 ZONED: SU-1

AREA OF NEW ADDITION 6,262 SF.

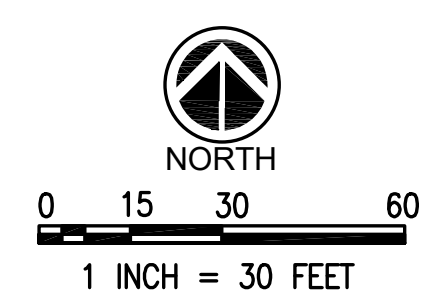
PARCEL ID: 0821-31-001/01.01  
 MAGNOLIA SPEECH SCHOOL  
 ZONED: SU-1

*EXISTING TREELINE TO REMAIN IN PHASE 1*

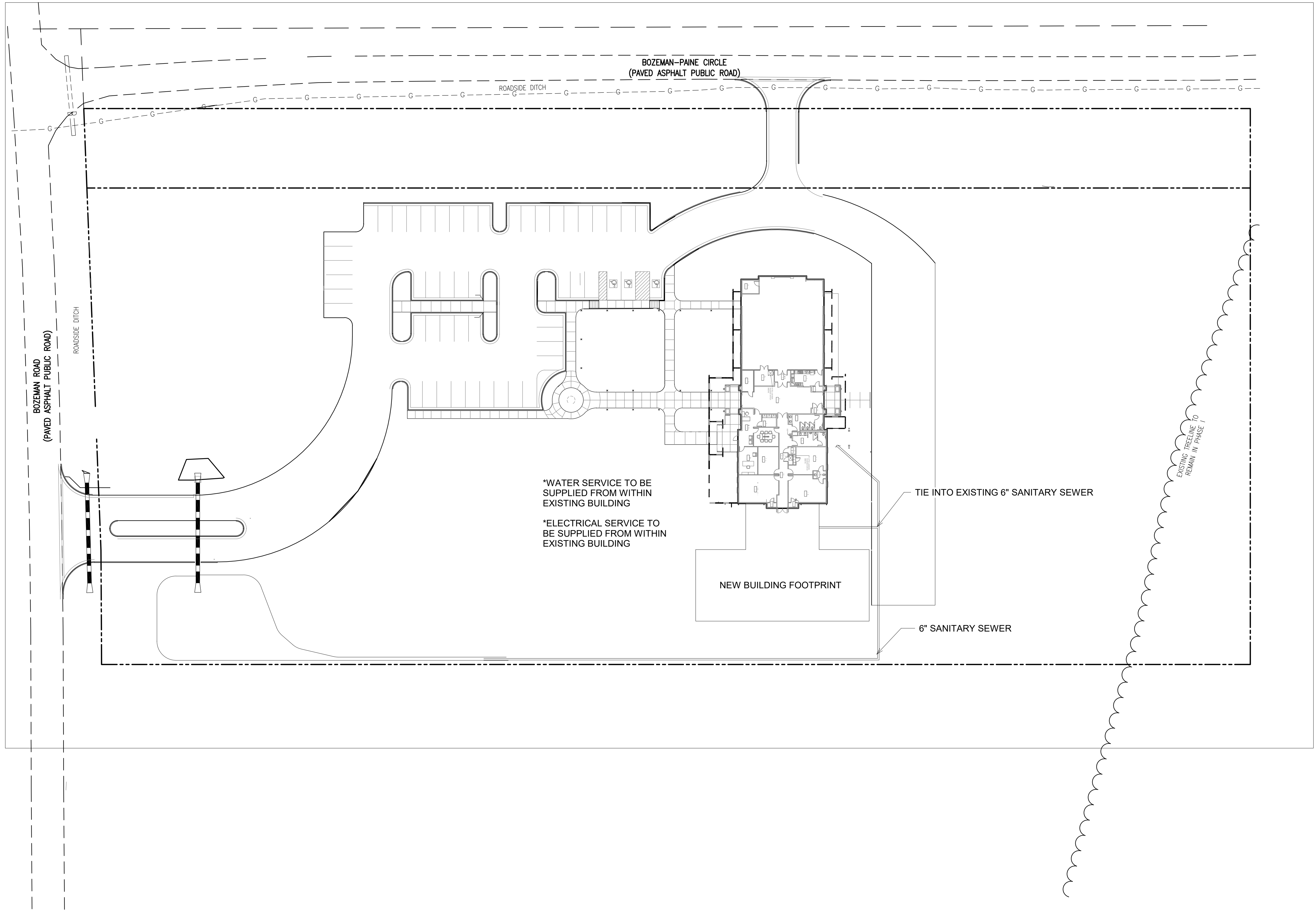
No.	Description	Date

**HOLY TRINITY CLASSROOMS ZONING**

Project number	Project Number
Date	07/15/2022
Drawn by	JJMF
Checked by	GTN



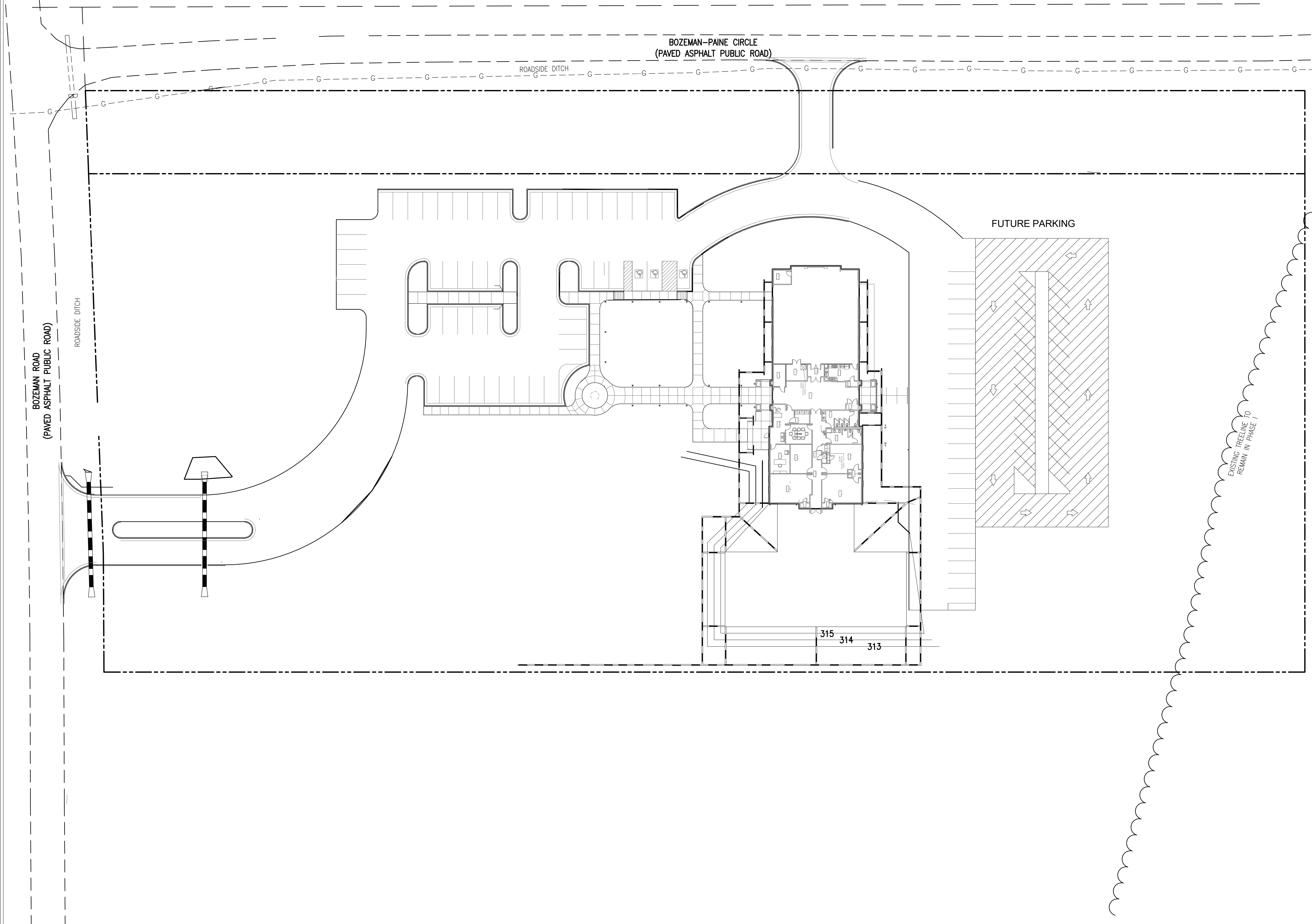
C3



No.	Description	Date

HOLY TRINITY CLASSROOMS  
UTILITIES

Project number	Project Number
Date	07/15/2022
Drawn by	JJMF
Checked by	GTN
<b>C4</b>	
Scale	



No.	Description	Date

# HOLY TRINITY CLASSROOMS FUTURE PARKING

Project number Project Number  
Date 07/15/2022  
Drawn by JJMF  
Checked by GTN

C5

Scale

